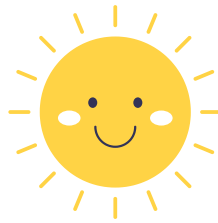


About Our Daycare

Promoting Quality Early Learning
Advocating for Equitable Access
Ensuring Safe and Healthy Environments

Building Partnerships

Effective advocacy involves collaboration and partnerships with parents, families, community members, and other professionals. By working together, advocates can amplify their voices and create positive change for children.



Where Learning is an Advocacy!

As educators we actively support children's development and well-being by engaging in activities that promote their rights and needs. This can include promoting quality early learning, advocating for equitable access to resources, and ensuring safe and healthy environments for all children.



Contact Us:



Phone
636-265-0364



website
Communityadvchildcare.com



Address
10390 Veterans Memorial Parkway
Lake St. Louis Mo 63367



Community Advocates Early Childcare

Center

636-265-0364

Actively supporting policies and practices that ensure all children have access to high-quality, affordable, and equitable early childhood education and care.





Incorporating Fun Through Advocacy in Childcare



Art & Craft

Development of fine motor skills, cognitive development, and emotional expression



Story Time

Our favorite time to read and interact with children. Using this time to bond with your little ones thru reading.



Nature Exploration

Nature Explore childcare refers to an approach where children engage with and learn from the natural world as a core part of their early childhood education and care



Educational Games

Designed to be both fun and educational, helping children learn through play. These games are intentionally created to foster cognitive, social, and emotional development while engaging children in a way that makes learning enjoyable.

Caring Hands, Growing Hearts

Compassion, empathy, and genuine care for children, is our focus and providing a nurturing environment where children feel loved, safe, and supported in their development. Our approach often extends beyond basic care, encompassing emotional, social, and even spiritual well-being.



Adventure, Friendship, and Fun!

- **Learning through Play:** This is a core component, where children learn by doing, exploring, and experimenting. Instead of traditional desk-based instruction, it focuses on hands-on activities, imaginative play, and problem-solving, all within a safe and supportive environment.
- **Encouraging Exploration and Discovery:** This involves providing opportunities for children to investigate their surroundings, both indoors and outdoors, fostering curiosity and a sense of wonder.
- **Promoting Physical Activity and Outdoor Play:** Many "adventure and fun" programs emphasize the importance of choices, solve problems, and take initiative, these programs help build self-esteem and independence.
- **Nurturing Creativity and Imagination:** Activities like dramatic play, loose parts play, and art-based learning encourage children to express themselves and think creatively.